

Newsletter

July 2010
www.olderdykes.org



Ten Forty Dinner and Discussion

6 pm Saturday 7 August

Summer Hill Community Centre

Dinner, Fun and Games

Helen has agreed to bring along some games and get things up and running.

Bring along:

- your favourite games (anyone for Mahjong?)
- friends you would like to play with
- a helping hand to keep the night running smoothly.

BYO food to share and your own drinks.

Entry fee: \$10 fully waged, \$5 concession.

Summer Hill Community Centre is near Lackey Street, which leads from the station. There is parking near the Centre.

By train, the Community Centre is on the right hand side of the station, going towards the City.

By bus, catch the 413 bus to Junction Road, Summer Hill or the 483 to the junction of Liverpool Road and Carlton Crescent, Summer Hill.

What's on Dykes for Dinner

Thursday 19 August 2010

6.30pm

Baja Cantina

43 Glebe Point Road (free 2 hour parking in Broadway Centre)

Mexican – licensed – no BYO for groups of 6 or more

RSVP to contact@olderdykes.org
no later than Sunday 15 August

Thursday 16 September 2010

6.30pm

Il Goloso

60 Dalhousie Street Haberfield

Italian - licensed & BYO

RSVP to contact@olderdykes.org
by Sunday 12 September



Social Event

Sunday 5 September 2010

11.30am

Yum Cha with a Twist

Annandale Hotel

Corner Nelson St and Parramatta Rd, Annandale

See menu at www.annandalehotel.com/anh/content.asp?id=143

Tables will need to be booked a week ahead, so please confirm your place by Sunday 29 August.
Email contact@olderdykes.org.

About Ten Forty Matrix

Ten Forty Matrix is an informal group of lesbians over forty, many of whom have been socially and politically active in Sydney since 1987.

We enjoy discussion and debate on the issues we face in work, life and at home, and hold regular fun events to keep us in touch with the lighter side of life.

Five years ago we established the website www.olderdykes.org to encourage national and international connections between older lesbians.

Ten Forty Matrix is not an organisation you have to join, but if you want to receive regular information about our activities and our bi-monthly newsletter, you need to take out a newsletter subscription.

Newsletter subscription

The annual subscription for a hard copy of our bi-monthly newsletter is \$10 payable in January each year.

Subscriptions can be paid at Ten Forty Dinner and Discussion evenings.

To receive a free emailed newsletter, please email contact@olderdykes.org.

To receive a hard copy please email contact@olderdykes.org.



Report from Ten Forty Matrix June meeting

Radical Lesbian, Lesbian Separatist & Radical Feminist: What do these labels mean and are they still relevant?

As we discovered in our popular June discussion the meaning and relevance of these terms really depends on where you are in time and space. Terms like radical feminist, for example, originated in the US and were far more popular there than in Australia. Many thanks to Rob, Margot and Spider whose task as panel speakers was to describe how and why certain terms had come to have the most meaning for them, and to Bronwyn for keeping them in line and facilitating the discussion that followed.

Rob's first experiences of separatist politics were in CAMP (Campaign Against Moral Persecution) in the 1970s. The women in CAMP staged a couple of walkouts, one in protest at the way women ended up being the ones left to clean up after the Saturday night party and the next over the hierarchical way the men ran the organisation and set the entire campaign agenda. While describing herself as a Lesbian separatist feminist she has nevertheless worked with men and found it comparatively easy to alert politically aware men to instances of sexism and racism.

Rob also spoke about how lesbian issues didn't really make it onto the women's liberation agenda even though lesbians were doing a lot of the work in the organisation. This was partly because the heterosexual women didn't really understand that there were lesbian issues and partly

from a fear of losing funding. It was only later in the '70s that lesbians started forming consciousness raising groups and separated their issues from gay male politics and the hetero-dominated women's liberation politics.

At the beginning of the evening we were reminded that this year France is celebrating the 40yr anniversary of the women's liberation movement and it was in Paris in the

1970s that Margot was first exposed to the ideas behind women's liberation when she picked up a special edition of the journal *Partisans*, published in 1970, entitled 'Libération de la femme, année zéro'. When analysed from a feminist perspective the world suddenly started to make a lot more sense and she continues to find feminism extremely useful in the analysis of patriarchal power structures.

On her return to Sydney Margot went to all the women's liberation marches and demos but really got involved in the politics of the movement (and other lesbians)

through film making in 1973. The label she keeps coming back to is radical feminism which she interprets as using feminism both for the political analysis of patriarchal power structures and to bring about change through collective action.

Spider was inspired by the fearless collective action of radical lesbians in Adelaide in 1975 and sees separatism as an essential mechanism

for removing energy from the patriarchy. Because of this she would describe herself as a lesbian separatist or as a womanist and separatist.

In practical terms this means doing things like choosing a female plumber rather than a male one or buying a computer manual written by a woman rather than a man.

Spider also believes in the need to create and maintain women only spaces. It is certainly a challenge though to live a completely separatist life especially where family are concerned.

Following the panel speakers there was wide ranging discussion covering:



- Socialism and feminism
- Can there ever be clear agreed definitions?
- Is debating definitions just a distraction from the real political issues?
- Is it possible to be a radical feminist and heterosexual at the same time?
- Why have we been having the same conversations about feminism for 40yrs?

Anyone interested in pursuing definitions of terms used in the feminist movement should look out the *Encyclopedia of Feminism* by Lisa Tuttle - published in 1986 it was one woman's attempt to define some of the language of feminism.

The C Word

Monthly support and information for lesbians who have been diagnosed with cancer and their partners.

Wednesday 28 July 6pm - 8pm

Topic: *Money Matters* – early access to superannuation, income protection benefits, insurance, mortgages, credit and debt from a cancer specific perspective.

Venue: The Women's Library
10 Brown Street, Newtown
Contact Siri May at ACON.

Tel: 9206 2007,
Mobile: 0407 287 268 or
email: smay@acon.org.au

So natural...

'People call it unnatural. All I can say is, it's always come naturally to me.'

Natalie Barney, American writer and unapologetic lesbian 1876 - 1972

Yum Cha

An excellent recipe for a pleasant Sunday lunch is to gently combine sixteen Ten Fortyers with trolley after trolley load of yum cha in the bustling atmosphere of the Marigold in George Street. To this add a generous seasoning of conversation and stir vigorously or subtly as the mood takes you.

It is also obviously a recipe popular with lots of other Sydneysiders - we counted ourselves lucky that our table was booked in advance and we didn't have to join the long queues.

The food, without being spectacular, had all the reliable old yum cha favourites and eating in a group gave us the opportunity to discover some new ones (tofu fa!). All in all a splendid venue for a mid-winter social event - warm, cosy and reasonably priced.



If you eat equal amounts of dark chocolate and white chocolate, is that a balanced diet?



Websisters Report

Esther reported at the June meeting that Ten Forty funds are in a healthy state. The Websisters explained that the Ten Forty website www.olderdykes.org needed to be moved out of the shared space it currently has on

the web to its own palatial detached residence. This will mean that the volume of contact emails that can go out in an hour will be less restricted and that we will have our own web control panel. The cost is very modest at \$20 per month and was passed by the meeting.

Research projects

Handholding in Lesbian Couples

You are invited to participate in an independent research project being conducted by Alison Che, a medical student, and Professor Richard Wassersug, Ph.D, both at Dalhousie University in Halifax, Nova Scotia.

They are interested in what handholding means to you. If you are a lesbian and have a partner, go to the following site to find out more about the survey.

www.surveymonkey.com/s.aspx?sm=4_2bxPp_2f_2fX0sCTYoozWFFRbw_3d_3d

The full survey takes about 15 minutes to complete. If you agree to participate, you may withdraw from the survey at any time. You will need to have your partner nearby at the start of the survey, but both of you do not need to fill it in. However both of you are invited to do so independently, if you wish.

Older LGBT people's care networks

Are you aged 60 years or over? Do you identify as gay or lesbian?

Do you receive care or emotional support from other people in relation to a health need or disability?

A new research project called "Diversity and Older People's Care Networks" is looking at gay and lesbian people over 60 throughout Australia who receive care or emotional support in relation to a health need or disability.

We're all getting older, and one day we might find ourselves in need of care. Help us carry out this important research so that the findings can inform public and private provision of care, both now and into the future!

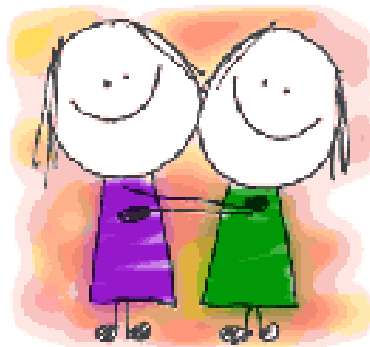
Dr Mark Hughes
Ph 0405 386 976 or mail
m.hughes5@uq.edu.au

Sue Kentlyn
Phone (07) 3379 7273 or email
dryad@internode.on.net

Chocolate

Researchers have discovered that chocolate produces some of the same reactions in the brain as marijuana.

The researchers also discovered other similarities between the two, but can't remember what they are...



Ten Forty Matrix

Who currently does what?

Bookings, liaison, and general contact: Jan

Utilities box: Sylvia and Wendy

Money Management: Esther

Website management:

Jan, Ruth, Dorothy, Diana, Rob,

Spider, Kate, Diann and Rosemary

Newsletter: editing and layout

Ruth and Dorothy

Photocopying: Judi

Mail-out: Esther

If you would like to become involved in any of the above, or have some ideas about social events and/or topics for our bi-monthly dinner and discussion evenings, please email contact@olderdykes.org

Two mums better than dad!

Researchers have found that children born to and raised by lesbian couples were better off socially and academically, and were more competent, than their peers.

Co-investigators of the National Longitudinal Lesbian Family Survey (NLLFS), Nanette Gartrell, MD and Henny Bos, PhD, began following 154 pregnant lesbians between 1986-92 to create the world's "largest, longest running, prospective, longitudinal study of same-sex-parented families".

According to their mothers' reports, the 17-year-old daughters and sons of lesbian mothers were rated significantly lower in social problems, rule-breaking, aggressive and externalising problem behavior than their age-matched counterparts.

If you would like to read the full report of this research, published in the American journal of Pediatrics, email contact@olderdykes.org and a copy will be emailed to you.